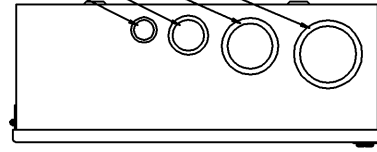


ASCO 185 SERIES SERVICE EQUIPMENT POWER TRANSFER SWITCH RATED 100, 200 AMPS, 240V SINGLE PHASE, 3 WIRE

KNOCKOUTS SIZES
TOP & BOTTOM

- 2" & 2-1/2"
- 1-1/2" & 2"
- 1" & 1-1/4"
- 1/2" & 3/4"



TOP WITH DOOR

NOTES:

- 1) Service Equipment Automatic Power Transfer Switch: ASCO D01AUS, 2 pole, 100 & 200 amperes, 240 vac. Listed to UL 1008, Standard for Transfer Switching Equipment. For use on Optional Standby Systems as defined by NFPA 70 (National Electrical Code (NEC), Article 702).
 - * Suitable for use as service equipment—Normal Source Only. An additional disconnect must be readily accessible for the alternate source, unless the alternate source is an accessible generator and can be readily shutdown.
- Automatic Power Transfer Switch: ASCO D185, 2 pole, 100 & 200 amps, 240 vac. UL Listed to UL 1008 Standard for Transfer Switching Equipment.
- Transfer Controller - ASCO Group 4 Automatic Transfer Switch Controller including: (Refer to 185 Series Operator's Manual, PN 381333-319, supplied with the transfer switch for detailed information)
- User Controls & Status Indication
 - Load on Preferred Source (Utility) LED indicator - green
 - Load on Alternate Source (Generator) LED indicator - red
 - Preferred Source (Utility) Acceptable LED indicator - green
 - Alternate Source (Generator) Acceptable LED indicator - red
 - Automatic Engine-Generator Exerciser (Setting & Engine Running) LED indicator
 - Transfer Test membrane pushbutton
 - Bypass Time Delay (active time delay or engine-generator exercise period) membrane pushbutton
 - Set Engine Exerciser membrane pushbutton

Time Delays

- Override Momentary Preferred Source (Utility) Outages - Factory set at 3 seconds
- Transfer to Alternate Source (Generator) - Factory set at 10 seconds
- Override Momentary Alternate Source (Generator) Outages - Factory set at 4 seconds
- Retransfer to Preferred Source (Utility) - 5 minutes/fix
- Engine-Generator Unloaded Running (Cooldown) Period - Factory set at 2 minutes

Control Signals

Engine-Generator Automatic Starting Controls - (1) form C contact

Remote Controls (Using Customer Supplied Contacts)

- Remote Test Feature
- Remote Test with Automatic Retransfer to Preferred Source (Utility) Feature
- Bypass Time Delay on Retransfer to Preferred Source (Utility) Feature

2) Enclosure: Listed to UL 50 Standard for Enclosures for Electrical Equipment. Type 1 Indoor. Constructed of 14 gauge steel. Finish - RAL 7035 Light Gray Polyester Powder Coating.

3) Neutral & Equipment Ground Terminations - Provide for Preferred (Utility) & Alternate (Generator) Sources and Load.

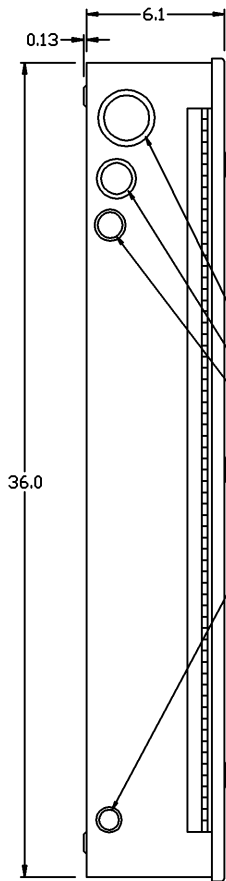
4) Conductor Sizes - 100 amps: (1) #14 AWG to 4/0 AWG Al or Cu, Alternate (Generator) Source and Load
200 amps: (1) #14 AWG to 4/0 AWG Cu ONLY, Alternate (Generator) Source and Load

(1) #4 AWG to 300 MCM, Preferred (Utility) Source

5) Main Bonding Jumper factory installed in the Disconnected position.

6) When used for Service Entrance the Main Bonding Jumper is to be removed from the Disconnected position and re-installed in the Connected position, with the existing hardware and one (1) additional 1/4-20 thread forming screw, which connects the Main Bonding Jumper to the Neutral Terminal Assembly.

7) Short Circuit Rating:
(Main): 10kA at 240 vac (Preferred (Utility) Source Disconnect Circuit Breaker), Square-D Cat. No. QBL22100, 2 pole, 100 amp or Square-D Cat. No. QBL22200, 2 pole, 200 amp.

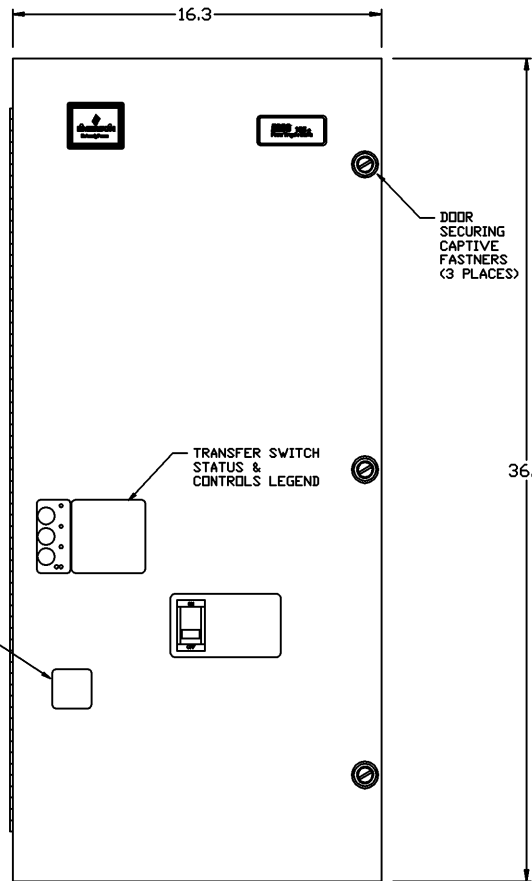


LEFT SIDE AUTOMATIC TRANSFER SWITCH WITH DOOR

KNOCKOUTS SIZES LEFT SIDE

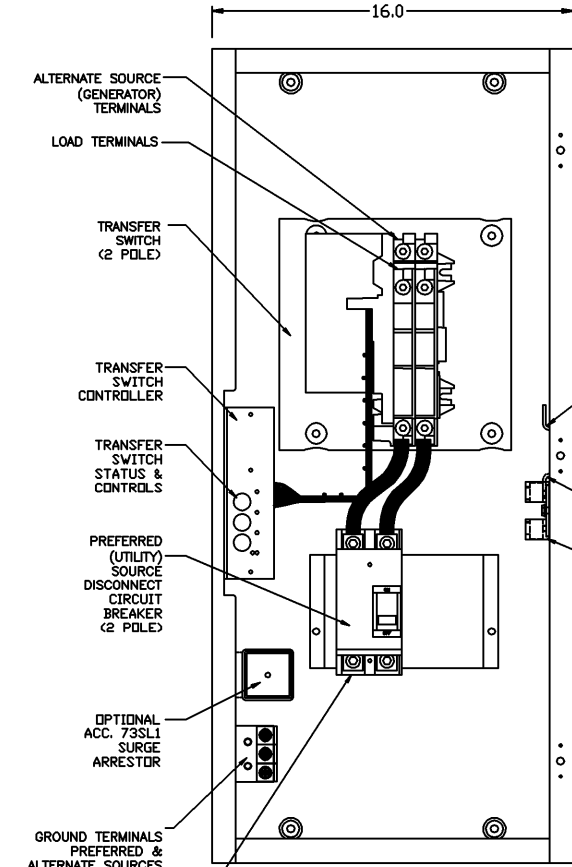
- 1-1/2" & 2"
- 1" & 1-1/4"
- 3/4" & 1"
- 1/2" & 3/4"

PLATE REMOVED WHEN OPTIONAL SURGE ARRESTOR SUPPLIED

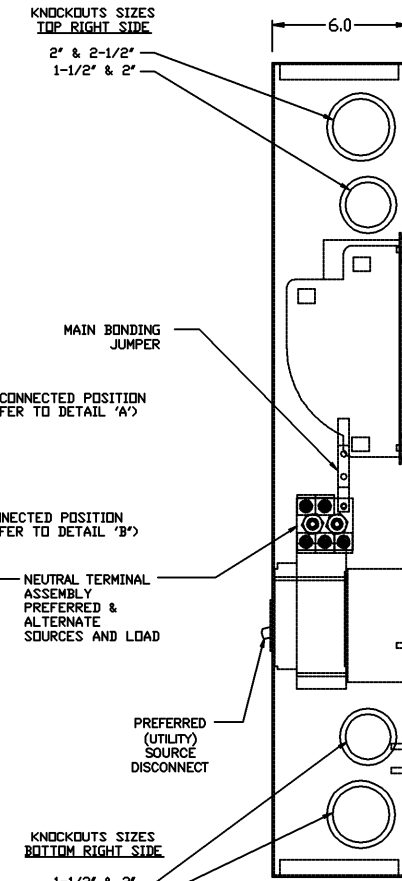


FRONT AUTOMATIC TRANSFER SWITCH WITH DOOR

DOOR SECURING CAPTIVE FASTENERS (3 PLACES)



FRONT AUTOMATIC TRANSFER SWITCH WITHOUT DOOR



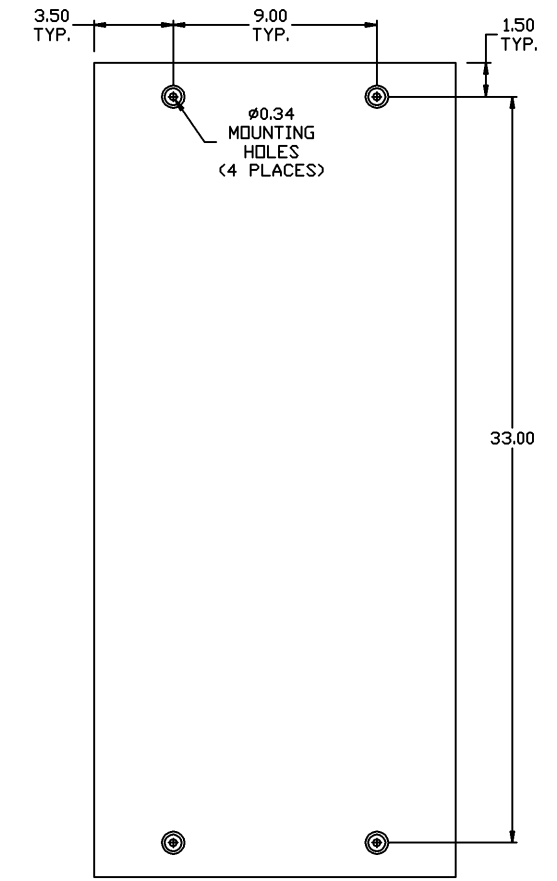
RIGHT SIDE AUTOMATIC TRANSFER SWITCH WITHOUT DOOR

KNOCKOUTS SIZES TOP RIGHT SIDE

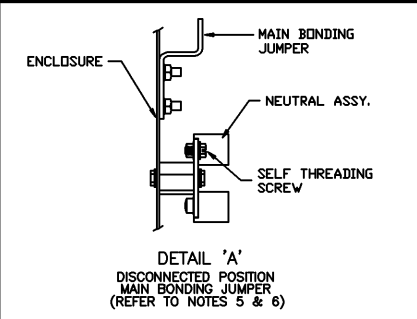
- 2" & 2-1/2"
- 1-1/2" & 2"

KNOCKOUTS SIZES BOTTOM RIGHT SIDE

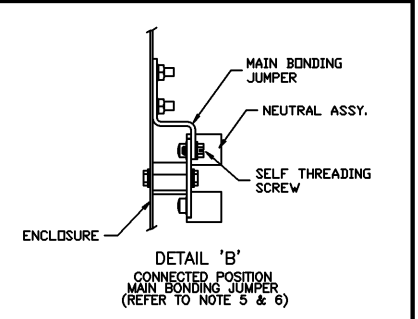
- 1-1/2" & 2"
- 2" & 2-1/2"



REAR AUTOMATIC TRANSFER SWITCH



DETAIL 'A'
DISCONNECTED POSITION MAIN BONDING JUMPER (REFER TO NOTES 5 & 6)



DETAIL 'B'
CONNECTED POSITION MAIN BONDING JUMPER (REFER TO NOTE 5 & 6)

E	224029	DAJ	JPB	8/28/09
SEE ECH				
D	222399	JPB	JPB	03/31/09
SEE ECH				
C	221452	JPB	JPB	01/16/09
SEE ECH				
B	221364	JPB	JPB	01/12/09
SEE ECH				

PROJECT NAME:		REV. TO SWFT		ECN NO.	BY	APP.	DATE
OUTLINE & INSTALLATION		SERIES 185 (100 & 200 AMPERES), TYPE 1, D01AUS, GRP 4 CONTROLS		SUITABLE FOR SERVICE EQUIPMENT - NORMAL SOURCE ONLY		THIRD ANGLE PROJECTION	
BY	DATE	MANUFACTURING TOLERANCES TO BE IN ACCORDANCE WITH ASCO PROCEDURE MP-1-003. FOR PLASTIC PARTS SEE MP-1-055	ASSEM. REF. NO.	COMPUTER GENERATED DRAWING			
DRAWN BY	JPB	08/15/08		SCALE	1/2" = 1"	SIZE	DS
CHECKED	JPB	08/15/08		PROPERTY OF ASCO POWER TECHNOLOGIES. USE PERMITTED FOR OUR WORK ONLY. ALL RIGHTS OF DESIGN OR INVENTION ARE RESERVED.			
APPROVAL	JPB	08/15/08		DWG. NO.	851743		
FINAL APPROVAL	JPB	08/15/08		DRAWING REV.	E	ECN	224029
				ASCO POWER TECHNOLOGIES, LP. FLORHAM PARK, NEW JERSEY 07832 U.S.A.			
				SHEET 10F1			